

Iowa Workforce Development and U.S. Census Bureau Partnership

Young Workers in Iowa March 2009

A large wave of workers born during the Baby Boom of 1946 to 1964 will be leaving the workforce over the next few decades. How many workers do we have in the workforce to replace them? What does our young workforce look like now? What industries will have worker or skill shortages?

What the workforce of the future looks like will depend on many factors. Decision makers are looking at the economic and policy implications for a wide range of programs and institutions, including Social Security and Medicare; financial markets; the housing market; and recreation, transportation and healthcare systems. Planners in Iowa will be able to keep an eye on the impact of such factors and emerging trends by using these Local Employment Dynamics statistics.

244,554

The number of jobs filled by workers age 14 through 24 in Iowa. This age group accounted for 16.7 percent of total covered employment. Between 2007 and 2008, the number of jobs held by this age group decreased by 0.03 percent.

48,279

The number of jobs held by women age 22 to 24 years. This age group accounted for 6.6 percent (733,191) of all jobs held by women in Iowa.

7,313

The number of jobs held by workers age 19 to 21 in Iowa's largest industry, manufacturing. Employment in this age group in this industry has dropped by 1.2 percent since 2006.



5.5%

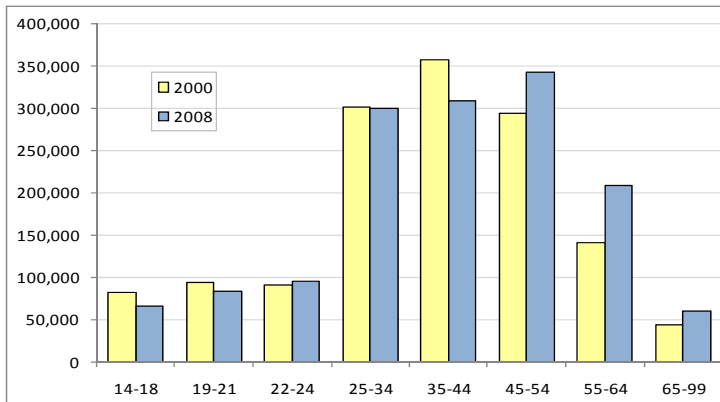
The percentage of workers under age 25 in the Educational Services sector.

19.8%

The percentage of workers age 14 to 18 in the Accommodations & Food Services sector.



Change in Age Distribution of the Workforce 2000—2008



Source: All statistics retrieved from the Local Employment Dynamics Program, which is a partnership between Iowa Workforce Development and the U.S. Census Bureau. For additional information, visit: <http://www.iowaworkforce.org/lmi/lehd.html>

NOTE: All time period references to **employment and wage** data is "Year Ended March 31, 2008".

Employment and Wages by Industry

22,475

Number of jobs in the **Accommodations and Food Services** sector that are filled by people ages 14 to 18. This industry sector reports the largest percentage of young workers, at 19.8 percent.

\$907.75

Average monthly wage for employees in the **Retail Services** sector, ages 19 to 21.

8,900

Number of jobs in the **Construction** industry that are held by workers aged 19 to 24. This age group has decreased by 4.8 percent (from 9,345) since 2005.

\$1,727.75

Average monthly wage for workers aged 22 to 24 in the **Health Care & Social Assistance** sector .

2,329

Number of jobs in the **Finance & Insurance** industry that are held by workers age 19 to 21. This age group represents 2.6 percent of all workers in this sector.

\$2,262.25

Average monthly wage for employees in the **Professional, Scientific & Technical Services** sector, ages 22-24.



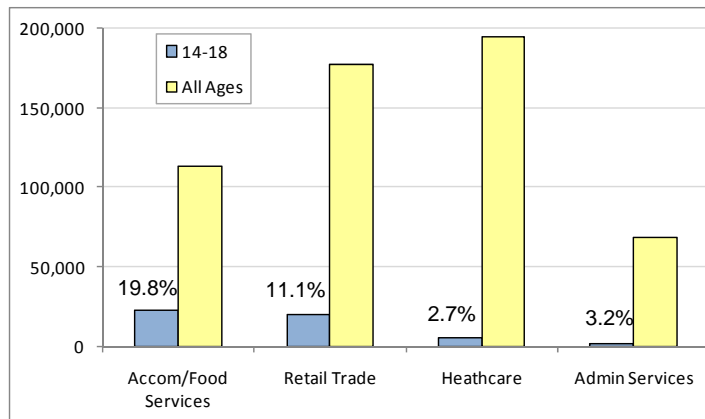
Wages in Manufacturing

Average monthly earnings in the Manufacturing sector in Iowa for employees aged 19-21 were \$1,998.00.

This amount is 49.2 percent lower than the average wage for all ages in this sector (\$3,935.25).



**Percentage of Workers Age 14 to 18
Four Largest Industries in Iowa
by Employment**



Employment and Wages by County

YOUNG WORKERS (AGE 14-24) AS A PERCENTAGE OF TOTAL COVERED EMPLOYMENT

42,649

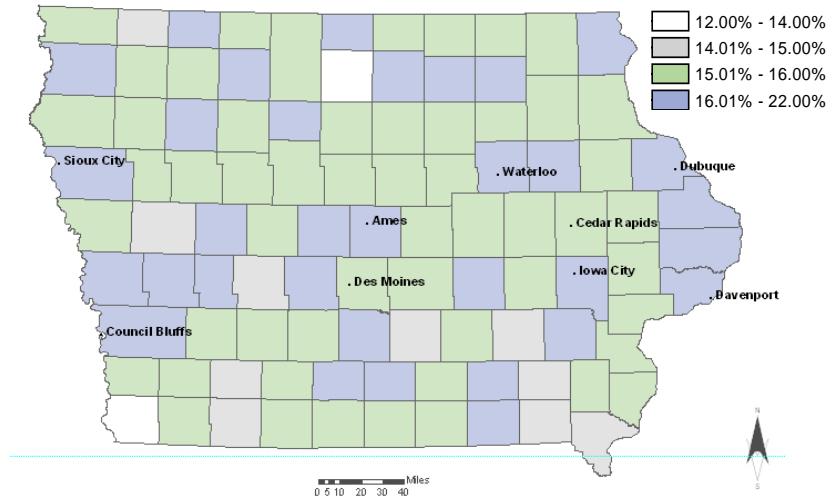
Polk County reports the largest number of workers age 14-24 in the state of Iowa.

21.8%

Lucas County reports the largest percentage of workers age 14-24.

104,614

The number of workers age 14-24 that are employed in the urban areas of **Polk, Linn, Scott, Black Hawk and Johnson** counties .



\$2,881.00

The average monthly income for all workers age 22 to 24 in the manufacturing industry in **Black Hawk County**, which is 60.0 percent higher than all workers in the county in the same age group (\$1,801.75) .

\$1,127.25

The average monthly income for all workers in Iowa, age 19 to 21 .

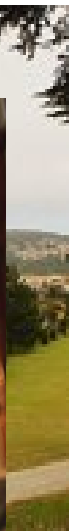
\$831.75

Average monthly income for workers age 19 to 21 in **Story County** in the Healthcare & Social Assistance industry.

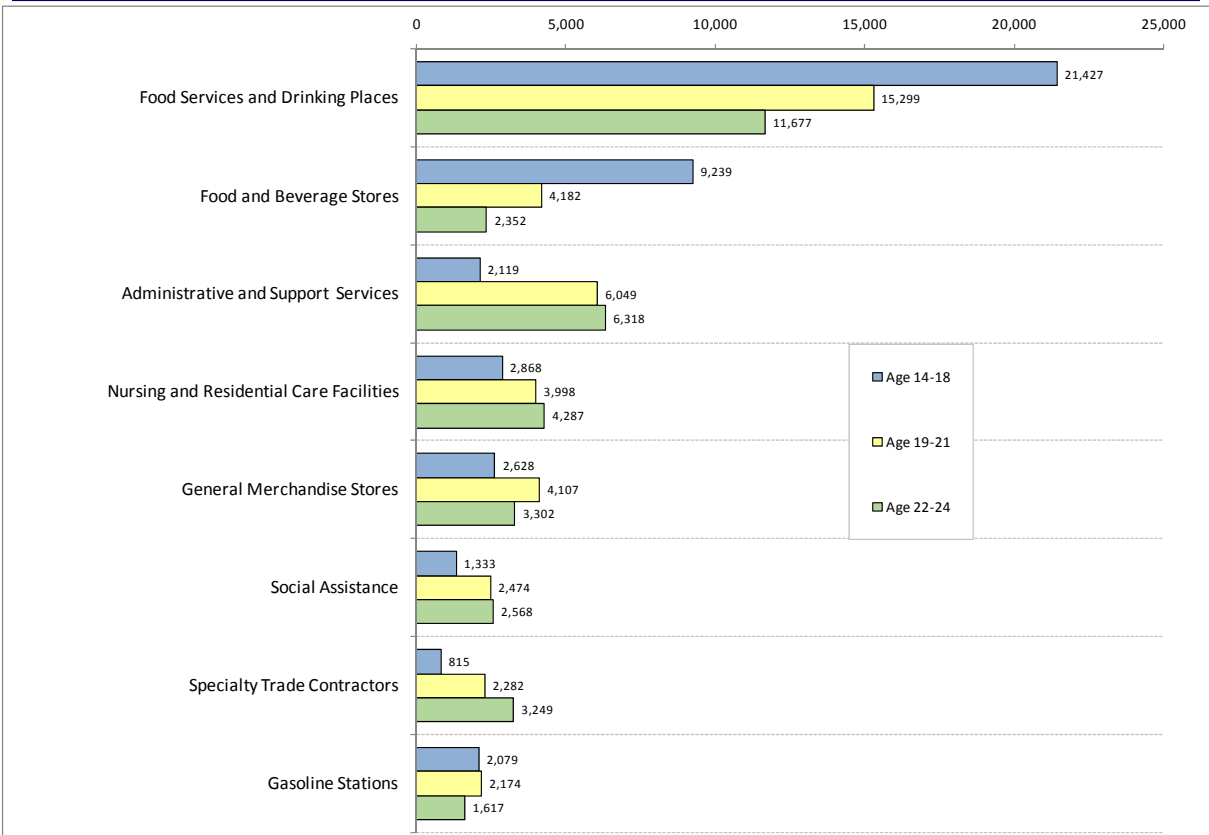


Young Workers as Percentage of Total Insured Employment

The map shown above describes the distribution of young workers in the state of Iowa. Fifty six counties report between 15 and 16 percent of workers, age 14 to 24, as compared to all workers. The counties in this selection are fairly evenly distributed between urban and rural areas.



Selected Industries with a High Proportion of Young Workers, by Age, for Iowa: 2008



CONTACT INFO

Iowa Workforce Development, Labor Market and Workforce Information Division

1000 E Grand Ave
Des Moines, IA 50319
515-281-6165
Fax: 515-281-8195
iwd.lmi@iwd.state.ia.us
www.iowaworkforce.org

Equal opportunity employer/program. Auxiliary aids and services are available upon request to individuals with disabilities.

TTY 515-281-4748;
1-800-532-1249



We do not yet know whether Iowa will undergo rapid and massive changes, or gradual changes in the workforce due to the retirement of experienced workers of the Baby Boom generation along with movement of workers in and out of Iowa.

However, we do know that both scenarios have the potential to affect the age distribution of the workforce significantly. LED statistics will help us keep an eye on the impact of these factors.